

## Winose Migration Quick Guide

### 1. Install new software.

Download the new software package from

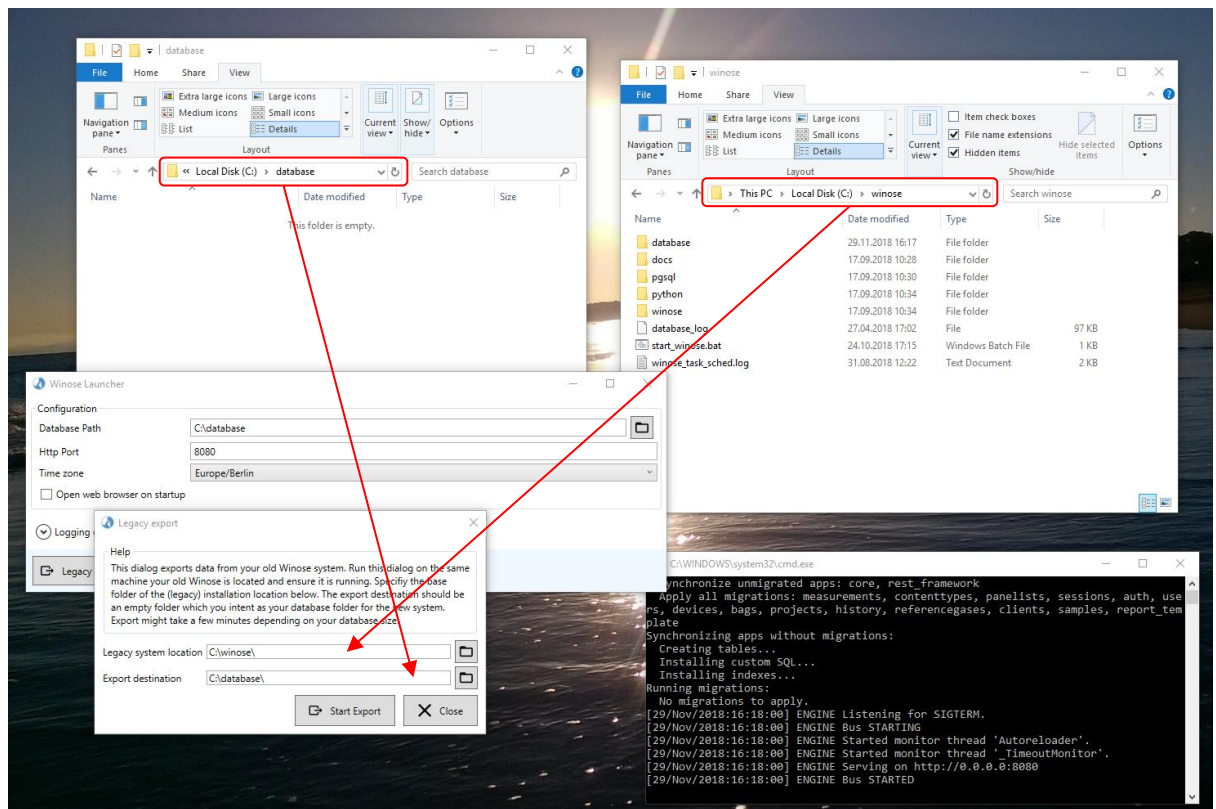
<https://downloads.olfasense.com/software/winose/WinoseSetup.exe>

Run and install into a location of your choice. The standard program folder the installation program suggests should be fine. Install it on the same machine your old/current Winose is running.

### 2. Prepare new database location.

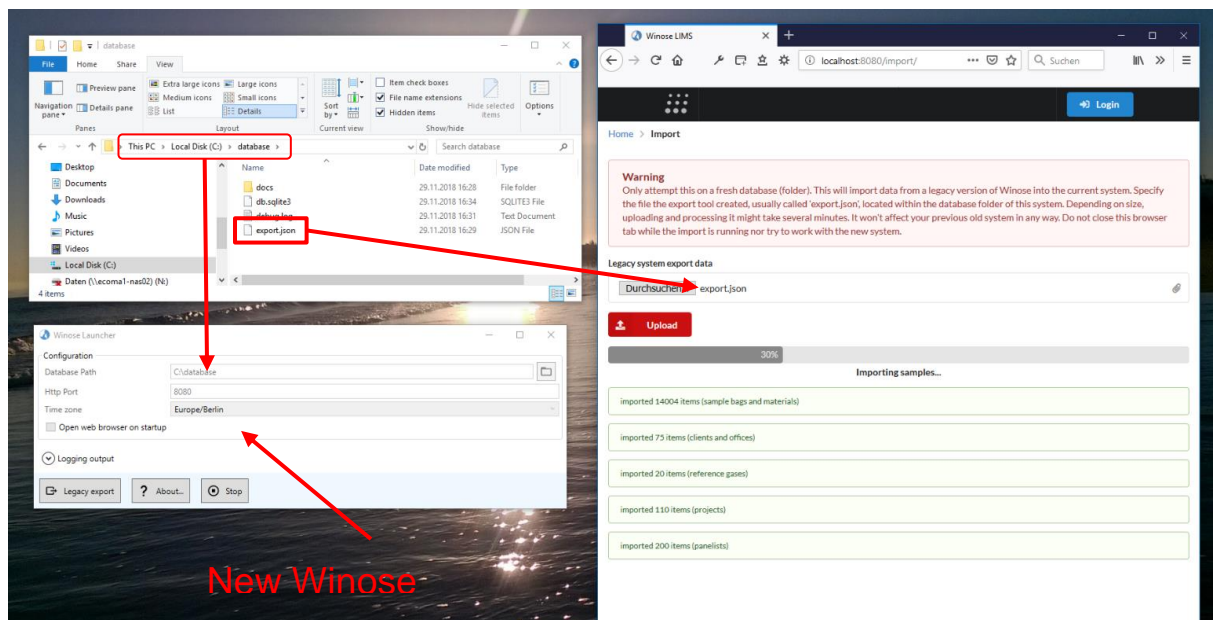
On the machine you've just installed the new software, create a new and empty folder which should hold your database from now on. Ideally pick a location which does not require elevated access rights, e.g. do not pick a folder inside the Windows or Programs folder trees. Network shares should work as well.

### 3. Run the winose launcher you've installed in Step 1 and click the "Legacy Export" button. In that dialog specify both the base folder of your current Winose version and the folder you've created in step 2. Click "Start Export" and follow the instructions on screen. This exports the data from the previous Winose into a format the new version can import. It also copies attached documents, such as calibration certificates, into the correct location. Depending on the size of your database this might take a few minutes. This requires your old Winose system to be running. Refer to the screenshot below.



- At this point you can and should stop the old Winose, as it would probably block the HTTP Port you're using (defaults to 8080) and it is no longer required in any way. In the Winose Launcher Application specify the database folder you've created in Step 2 and hit "Start". The very first start might take a few seconds as the new database gets initialized. Your new Winose should now be up and running. Assuming you went with the default Port again it should be accessible at <http://localhost:8080> on the machine you're working on.
- The freshly installed Winose should present you with a login page and detect that it is working a new database. Select "import legacy data". Do not accidentally create a default admin account, as this would make the import inaccessible without deleting database first.

At the import page, select the file 'export.json' inside the database you've prepared and hit upload. Depending on the amount of data this step might take a while. Do not close the browser tab. Once finished, the import page will redirect you to the login page again. Check if all the data was correctly imported as you would expect. Refer to the screenshot below.



### Known/common Import Problems

If one of the import steps fails it's most likely due to data which is no longer considered valid in the new system. A notable example is leading and trailing whitespaces, the old system would consider "SampleBag" and " SampleBag" to be two different bag names. The new system would treat these as an error since bag names need to be unique. If you suspect such a case, the easiest way to deal with it is to start the old winose, fix the problematic items and restart from Step 2.

### Resetting/Deleting the new database

If something went wrong during the import and you want to start over you can simply delete everything inside the database folder you've picked.

### Non GUI Start

In certain scenarios it might be handy to work without the graphical launcher application. For these cases the Winose also installs a simple batch file into the location you've picked in Step 1. Find the "noguistart.bat" inside your installation location and open it with any text editor. Configure the lines with TZ (TimeZone), Port (the HTTP-Port) and DBFOLDER (the database folder from Step 2) and save it. For time zones refer to the launcher application to see what choices are available.

### (New) Update Handling

One huge advantage of the new Winose version is how updates are handled. Updating is simply done by running (a newer) setup.exe again, which would detect that the system is already installed and replace contents appropriately. Since your database itself sits in a completely different folder you won't have to worry about breaking anything. As previously, while apply such update, the system should be stopped. The Launcher Application has an About Dialog which checks if a new version is available.

### Backups

The only thing you need to backup for this version is the database folder you've selected in Step 2. The files installed by the setup program are static files in nature, in case of any data loss these can be restored easily by installing Winose again. If you just want to temporarily access any previous state/backup of you database, you could also simply change the folder path in the Launcher Application for as long as necessary.